



**CEMENT CONCRETE
& AGGREGATES AUSTRALIA**

CEMENT, CONCRETE, STONE & SAND

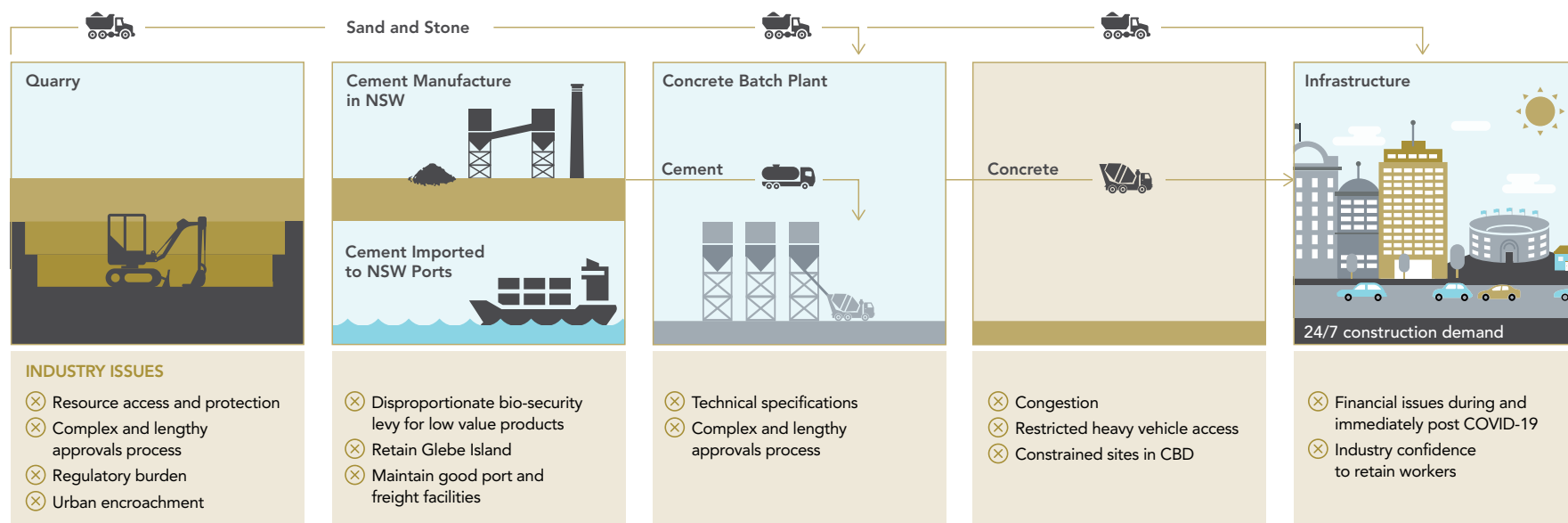
Rebuilding New South Wales;
Protecting Lives; Creating Jobs



HEAVY CONSTRUCTION MATERIALS SUPPLY CHAIN

The COVID-19 pandemic has significantly disrupted the New South Wales economy. The construction sector, supported by an efficient heavy construction materials supply chain, provides the engine for the New South Wales economic recovery. Cement, concrete, stone and sand are the critical materials that enable the New South Wales construction industry, employing 370,000 workers and contributing 45% of the New South Wales taxation revenue base.

EFFICIENT SUPPLY CHAIN → DELIVERS → JOBS IN A RECOVERING ECONOMY



IMPLEMENTING THESE CHANGES NOW WILL:



Keep people and communities safe and working



Allow NSW to rebuild our economy fast



Attract essential investment



Fast-track critical infrastructure for the future

Facilitating economic recovery through stimulus, tax relief and regulatory improvement

WHAT NEEDS TO CHANGE

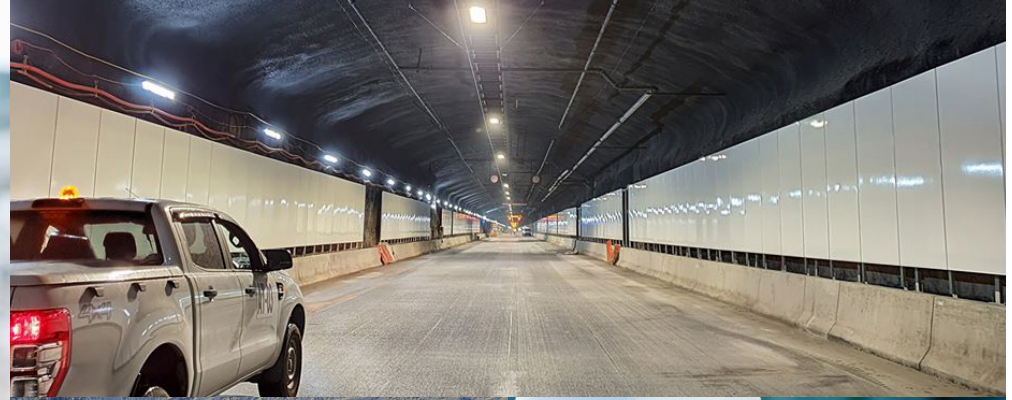
- ✓ Manage introduction of Respirable Crystalline Silica Workplace Exposure Standard
- ✓ Fast track approvals
- ✓ Finalise supply & demand study for Greater Sydney and act accordingly
- ✓ 24 hr product loading and sales

- ✓ 24 hr product loading and sales
- ✓ Remove bio-security levy on cement and clinker which inherently has low or no bio-security concern

- ✓ Shift to performance based specifications
- ✓ Alternative sources of aggregate substituted in concrete mixes if quarries closed due to COVID-19
- ✓ Fast track approvals

- ✓ Require night time concrete pours in traffic congested and site constrained areas
- ✓ Streamline last kilometre access
- ✓ Provide greater access for higher mass limit vehicles

- ✓ Housing stimulus package
- ✓ Increase infrastructure spend
- ✓ Assist local government in infrastructure backlog
- ✓ Fast track development approvals
- ✓ Fast track road maintenance while roads remain uncongested
- ✓ Address maintenance backlog
- ✓ Higher priority on local employment outcomes



BENEFITS OF ACTING NOW:

- ✓ Keeps New South Wales workers employed
- ✓ Allows the construction sector to act as the engine room to rebuild the New South Wales economy fast
- ✓ Enable heavy construction materials supply chain to ramp up fast
- ✓ Retains industry skills and capability in New South Wales
- ✓ Gives industry confidence to invest and raise capital
- ✓ Ensures New South Wales Government's record infrastructure investment remains on schedule
- ✓ Drives affordable and innovative infrastructure



SYDNEY OFFICE
PO Box 124
Mascot NSW 1460

(61 2) 9667 8300
www.ccaa.com.au
info@ccaa.com.au

f 1CCAA

🐦 @ccaa_au

in cement-concrete-aggregates-australia

